



42 Rayleigh Avenue, Leigh-On-Sea
Leigh-On-Sea

£575,000



42 Rayleigh Avenue

Leigh-On-Sea, Leigh-On-Sea

Cherished 4-bed family home on wide plot with in-out driveway, detached garage, and huge potential to make it your own. Outstanding schools, shops, and dining nearby. Ready for new memories.

Council Tax band: F

Tenure: Freehold

EPC Energy Efficiency Rating: D

EPC Environmental Impact Rating: D

42 Rayleigh Avenue

Leigh-On-Sea, Leigh-On-Sea

Cherished 4-bed family home on wide plot with in-out driveway, detached garage, and huge potential to make it your own. Outstanding schools, shops, and dining nearby. Ready for new memories. Council Tax band: F

Tenure: Freehold

EPC Energy Efficiency Rating: D

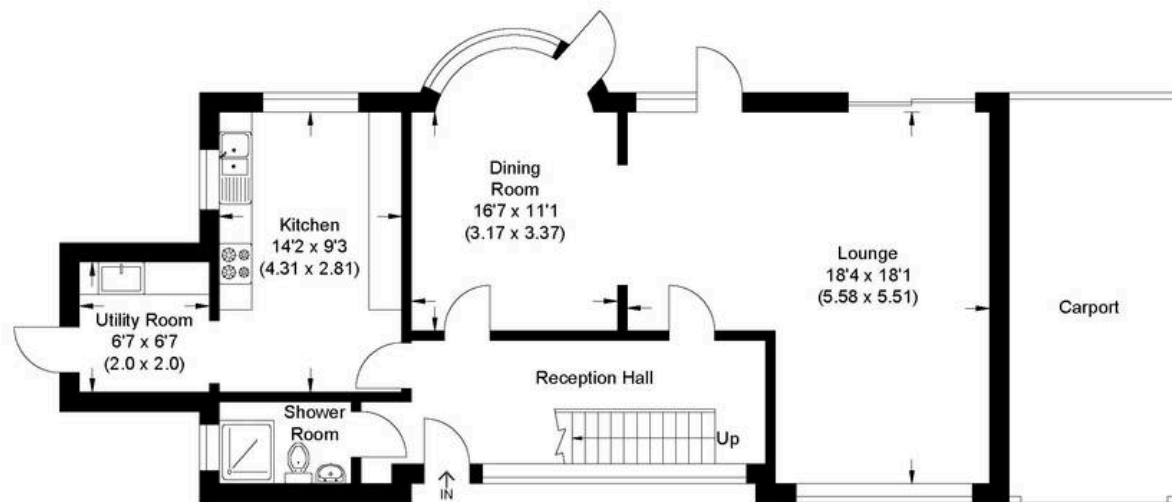
EPC Environmental Impact Rating: D

- 4 Bedroom Detached House with Huge Potential
- Modern Downstairs Shower Room
- Kitchen and Separate Utility Room
- Detached Garage and Separate Larder Room
- Car Port
- In & Out Driveway
- Excellent Location for Outstanding Schools

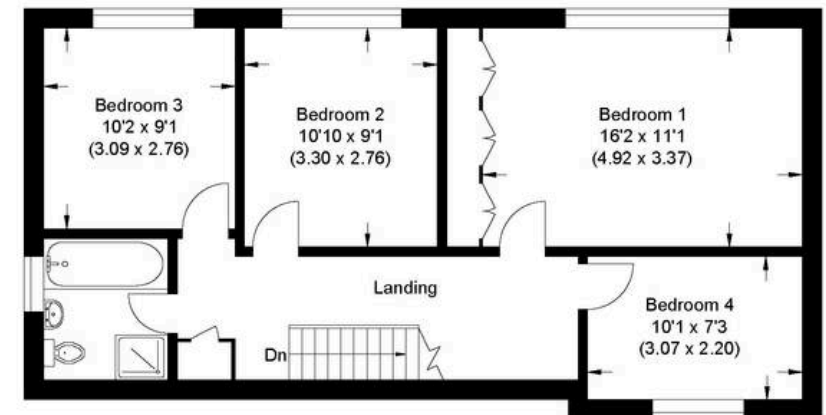




Approximate Gross Internal Area
136.43 sq m / 1468.52 sq ft



Ground Floor



First Floor

Illustration for identification purposes only, measurements are approximate, not to scale.



You can include any text here. The text can be modified upon generating your brochure.

