



Flat 12, Oak Lodge, 21 Southend Road
Hockley

Guide Price **£190,000**



Flat 12

Oak Lodge, Hockley

Ground-floor 2-bed flat in Oak Lodge development for over-55s. Bright lounge, modern kitchen, shower room. Convenient location with easy access to amenities. Community living with lounge, gardens, and on-site manager for peace of mind. Retirement living at its best in Hockley.

Council Tax band: C

Tenure: Leasehold

EPC Energy Efficiency Rating: C

EPC Environmental Impact Rating: D

Flat 12

Oak Lodge, Hockley

Ground-floor 2-bed flat in Oak Lodge development for over-55s. Bright lounge, modern kitchen, shower room. Convenient location with easy access to amenities. Community living with lounge, gardens, and on-site manager for peace of mind. Retirement living at its best in Hockley.

Council Tax band: C

Tenure: Leasehold

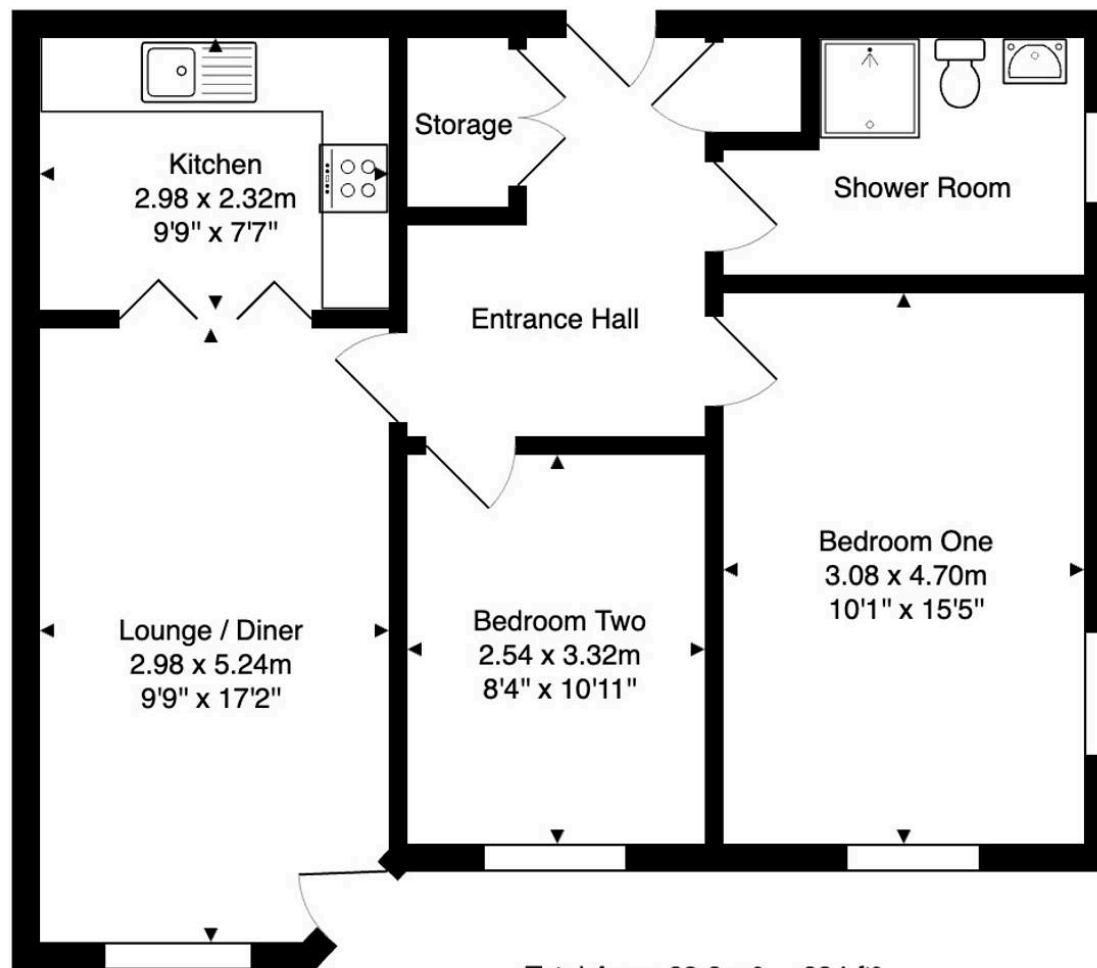
EPC Energy Efficiency Rating: C

EPC Environmental Impact Rating: D

- Featuring a bright lounge/diner, a modern kitchen, and a large main bedroom with plenty of natural light and neutral décor.
- Convenient Shower Room: Equipped with a walk-in shower, designed for ease of use and practicality.
- Central Hockley Location: Just a short, level walk to Hockley High Street, offering a variety of independent shops, cafés, and essential services.
- Nearby Healthcare Facilities: A GP surgery, dentist, and pharmacy are all within easy walking distance, ensuring peace of mind.
- Excellent Transport Links: A bus stop is seconds from the property, providing convenient access to local areas and beyond.
- Active Over-55s Community: Oak Lodge is designed to foster a sense of community, with opportunities to socialise and take part in activities.
- Beautiful Communal Gardens: Enjoy well-maintained outdoor spaces without the hassle of upkeep.
- On-Site Manager: Provides day-to-day assistance and support, ensuring the development runs







Total Area: 63.6 m² ... 684 ft²

All measurements are approximate and for display purposes only.



You can include any text here. The text can be modified upon generating your brochure.

