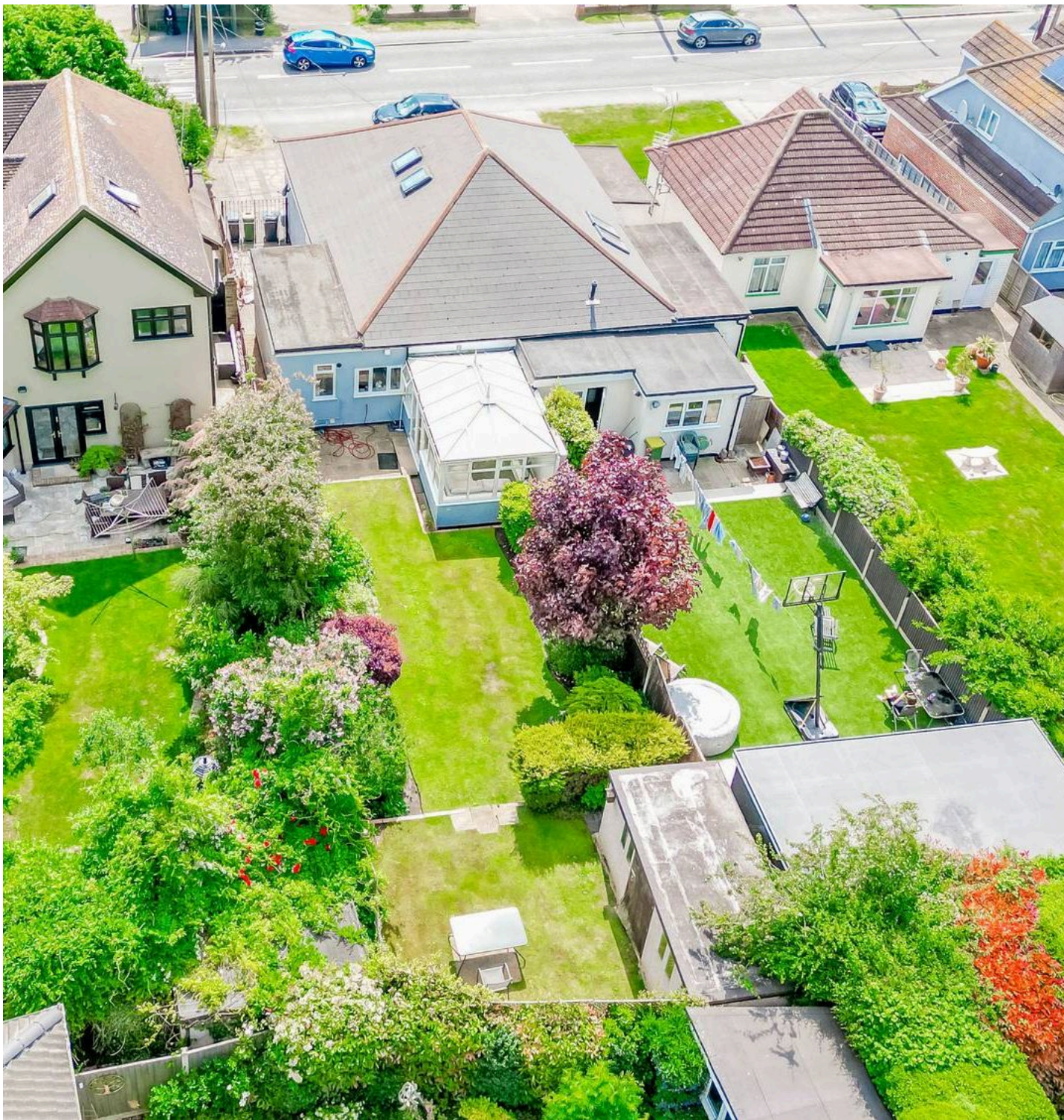




225 Eastwood Road, Rayleigh
Rayleigh

Guide Price **£425,000**



225 Eastwood Road

Rayleigh, Rayleigh

Charming 2-bed Semi-Detached Bungalow with spacious driveway, large lounge, modern bathroom with underfloor heating, airy conservatory, stunning rear garden, and walking distance to amenities and schools.

Council Tax band: C

Tenure: Freehold

EPC Energy Efficiency Rating: D

EPC Environmental Impact Rating: E

225 Eastwood Road

Rayleigh, Rayleigh

Charming 2-bed Semi-Detached Bungalow with spacious driveway, large lounge, modern bathroom with underfloor heating, airy conservatory, stunning rear garden, and walking distance to amenities and schools.

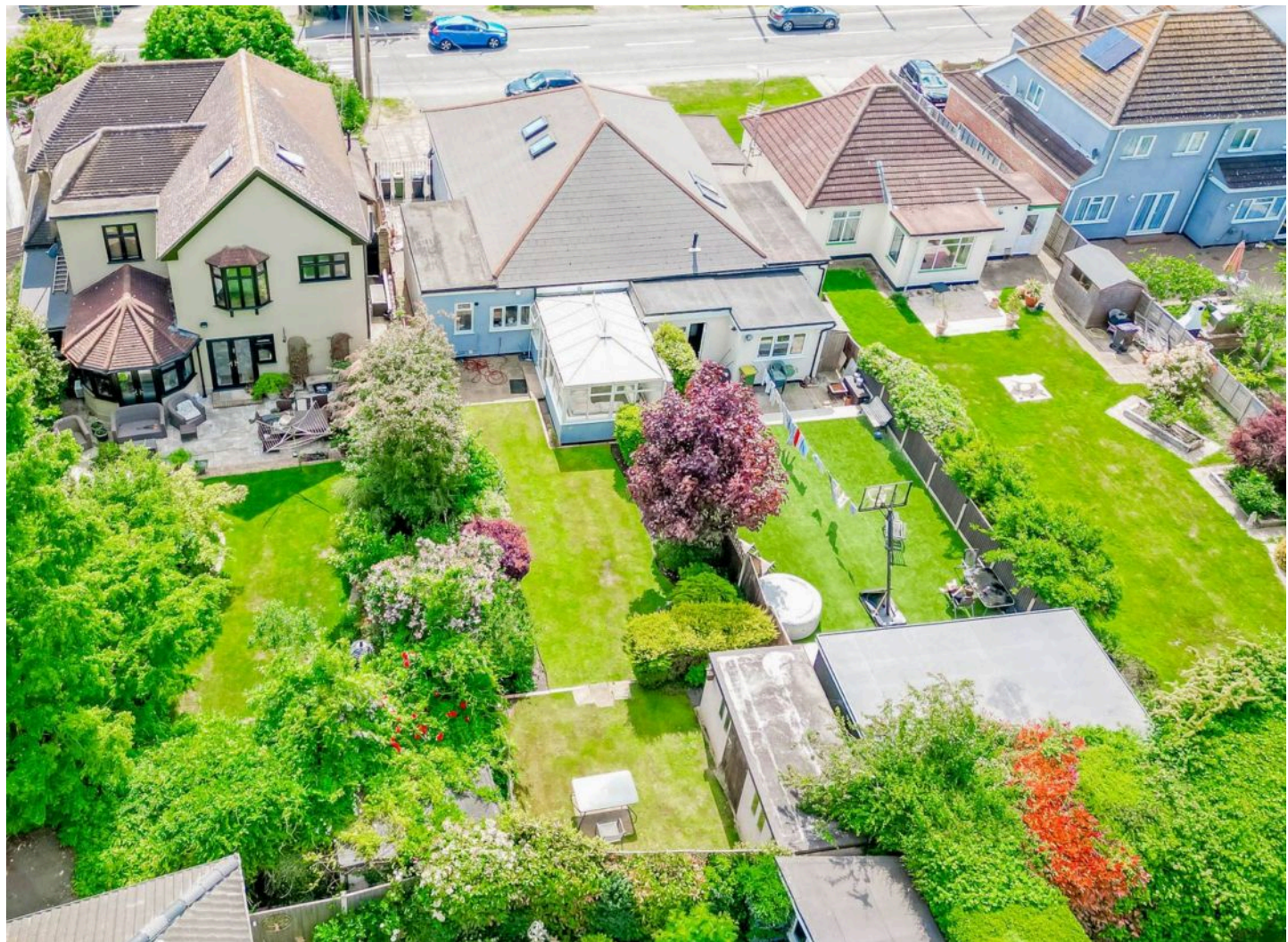
Council Tax band: C

Tenure: Freehold

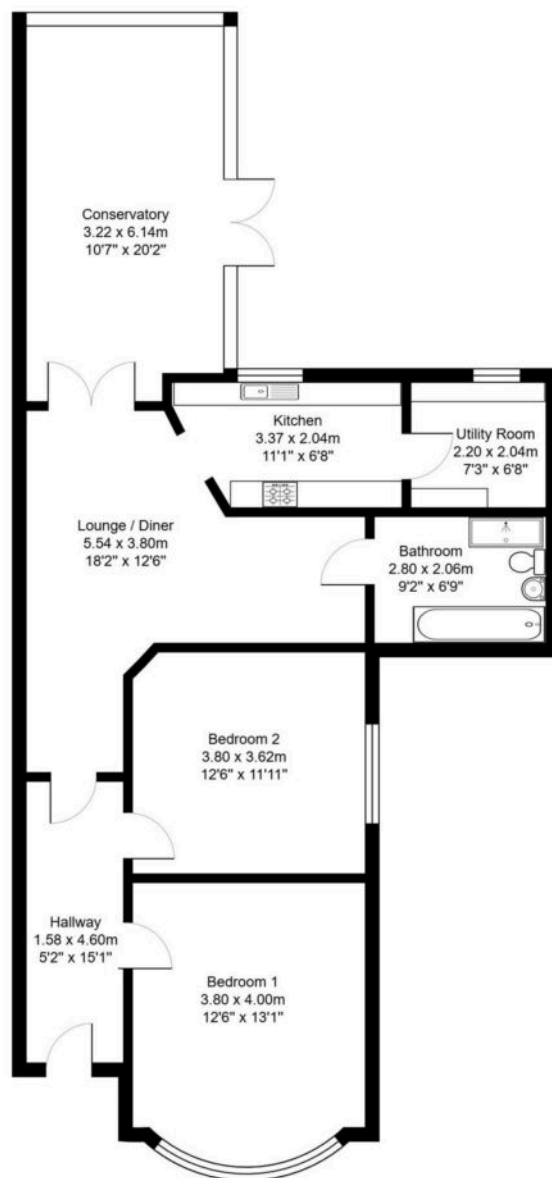
EPC Energy Efficiency Rating: D

EPC Environmental Impact Rating: E

- Guide Price - £425,000 - £450,000
- Two Great Sized Bedrooms
- Ample Off Street Parking
- Modern Interior
- Immaculate Four Piece Suite Bathroom
- Excellent Local Amenities
- Easy Access Onto The A127
- In Catchment To Wyburns Primary School, Grove Wood Primary School & Fitzwimarc School
- Walking Distance to Rayleigh High Street
- Generous Garden (APPROX' 60FT)

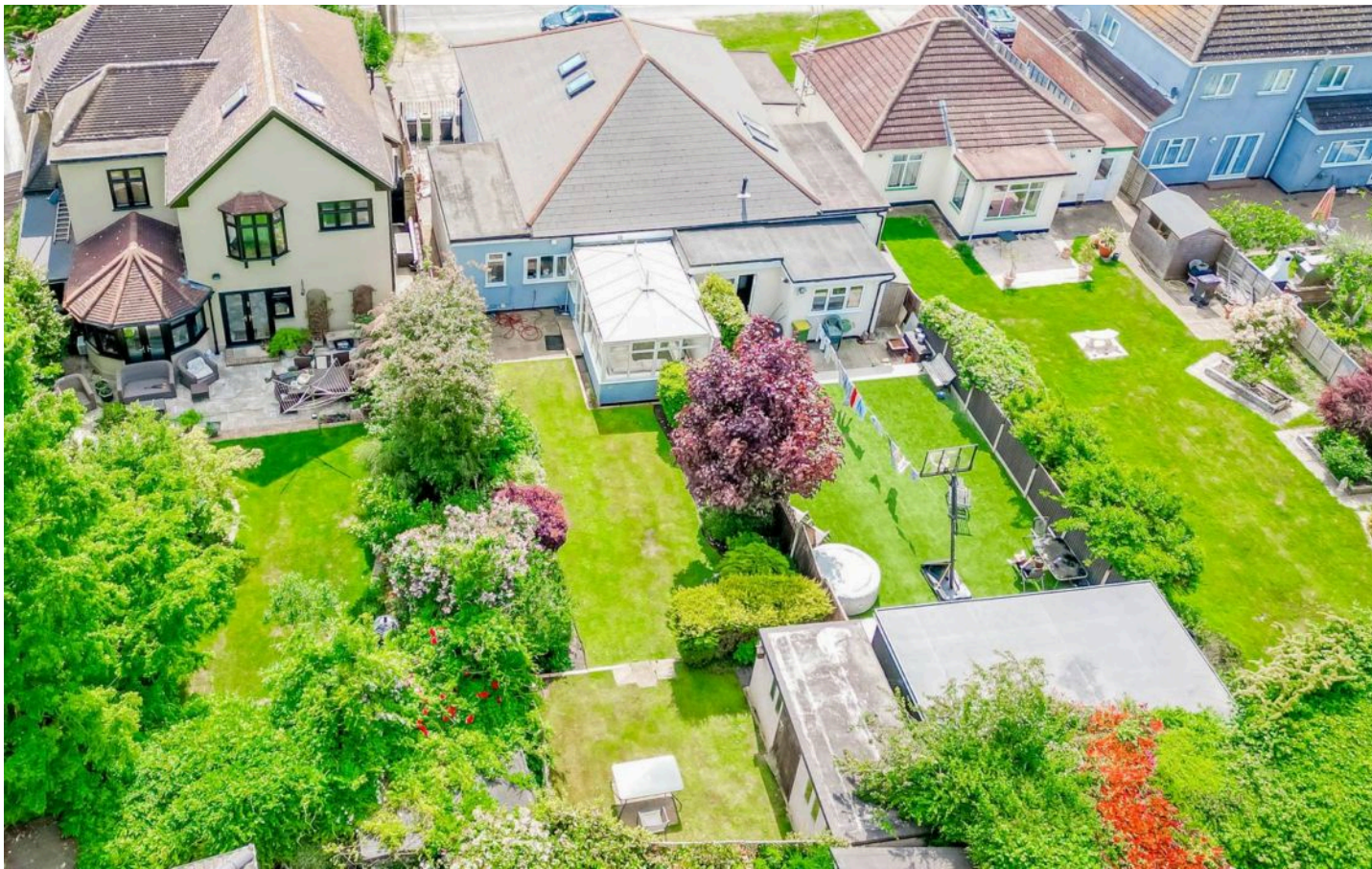






Total Area: 98.6 m² ... 1061 ft²

All measurements are approximate and for display purposes only.



You can include any text here. The text can be modified upon generating your brochure.

