



3 Salem Walk, Rayleigh
Rayleigh

Guide Price **£375,000**



3 Salem Walk

Rayleigh, Rayleigh

Charming 3-bed end of terrace house by Sweyne Park & Glebe Schools. Modern kitchen, spacious lounge, home office, and tranquil bathroom. Corner plot for privacy. Ideal home or investment property.

Council Tax band: C

Tenure: Freehold

EPC Energy Efficiency Rating: D

EPC Environmental Impact Rating: D

3 Salem Walk

Rayleigh, Rayleigh

Charming 3-bed end of terrace house by Swayne Park & Glebe Schools. Modern kitchen, spacious lounge, home office, and tranquil bathroom. Corner plot for privacy. Ideal home or investment property. Council Tax band: C

Tenure: Freehold

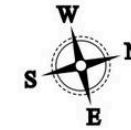
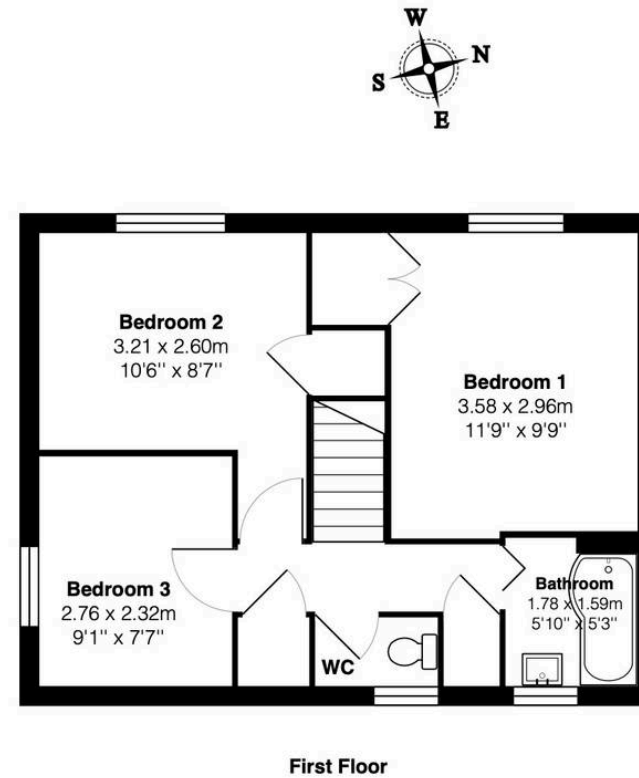
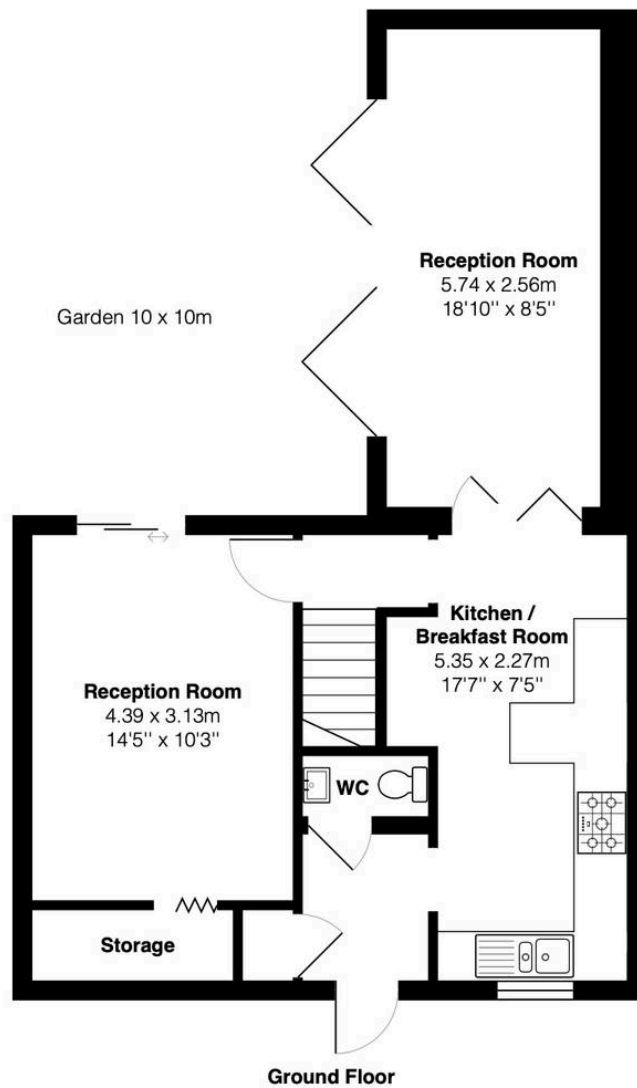
EPC Energy Efficiency Rating: D

EPC Environmental Impact Rating: D

- Guide price £375,000 to £425,000
- Three bedroom terrace family home
- A well-presented family home
- Modern fitted kitchen/breakfast room
- Modern fitted bathroom
- Extended to the rear to create a welcoming space ideal for a home office
- Landscaped Rear Garden
- Within walking distance to local shops, schools and mainline railway station
- Situated in a popular location







Total Area: 93.1 m² ... 1002 ft²

All measurements are approximate and for display purposes only.



You can include any text here. The text can be modified upon generating your brochure.

