

52 Woodstock Crescent, Hockley

£130,000 Leasehold

Guide Price – £130,000 – £140,000 • Stylish refurbished bathroom • Allocated and communal parking • Ideal first purchase or investestment • 10 Minute walk to Hockley Train Station • Rental potential £750–£800 PCM • Quiet location and Short Walk to Hockley Woods • 4 Minute Walk to Hockley High Street • Communal garden area • Long lease 954 years



Council Tax band: A

Tenure: Leasehold

EPC Energy Efficiency Rating: D

EPC Environmental Impact Rating: D

Kitchen

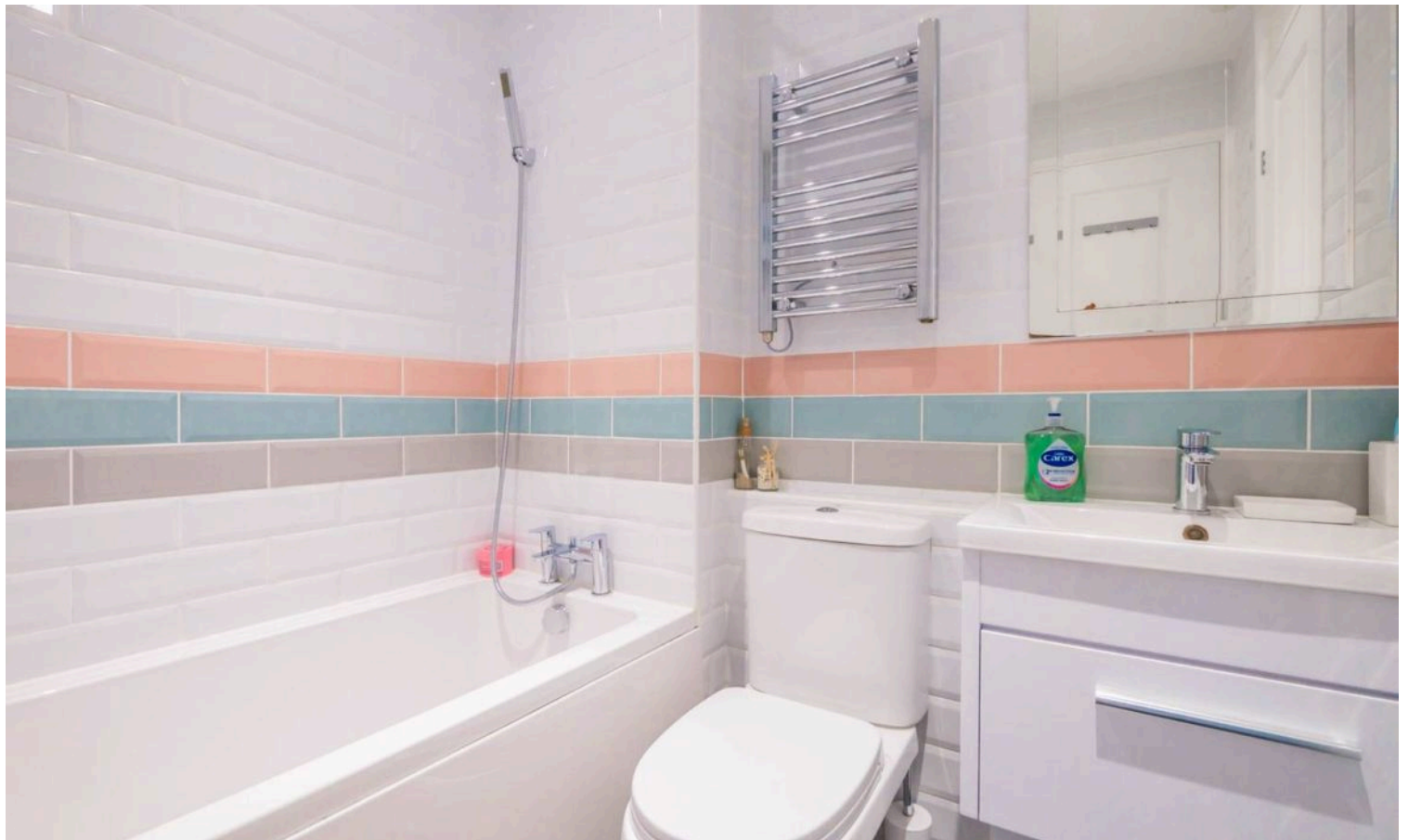
9' 5" x 5' 4" (2.86m x 1.63m)

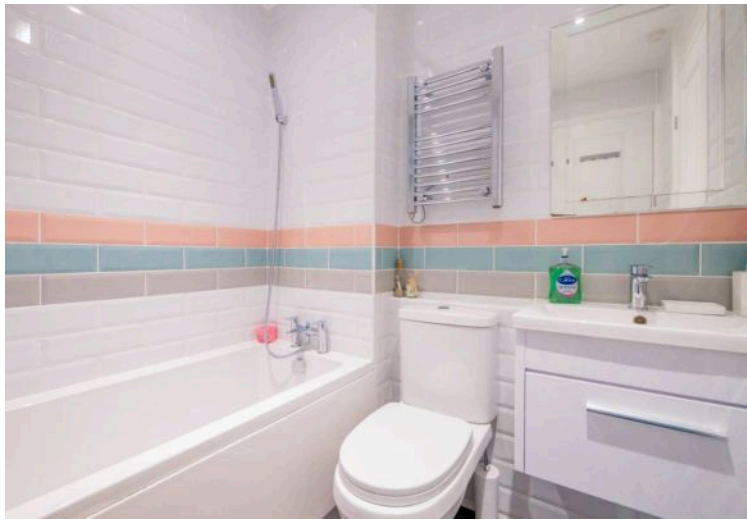
Living area / Bedroom

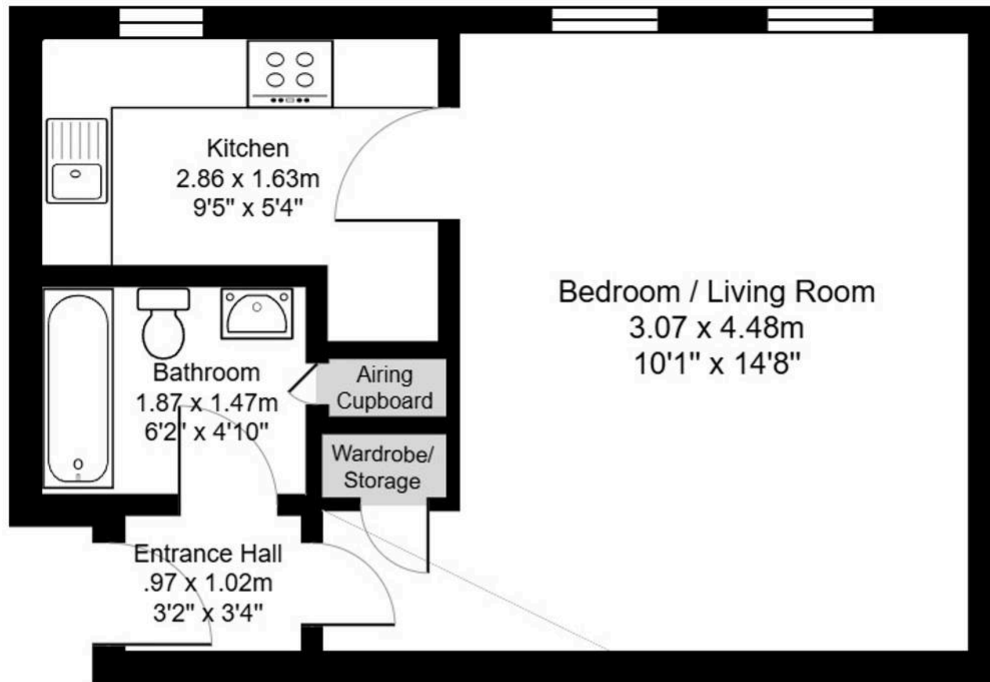
10' 1" x 14' 8" (3.07m x 4.48m)

Bathroom

6' 2" x 4' 10" (1.87m x 1.47m)







Total Area: 29.0 m² ... 313 ft²

All measurements are approximate and for display purposes only.

You can include any text here. The text can be modified upon generating your brochure.