



**532 Palm Court, Battlesbridge**  
Wickford

Fixed Price **£220,000**





## 532 Palm Court

Battlesbridge, Wickford

For over 55s, this 2-bed park home by the river Crouch offers comfort, style & community. Well-maintained & move-in ready, it boasts a kitchen, utility, 2 double beds, ensuite, family bath, private decking, parking, & clubhouse access.

(£472.86/month fees)

Council Tax band: B

Tenure: Leasehold



# 532 Palm Court

Battlesbridge, Wickford

For over 55s, this 2-bed park home by the river Crouch offers comfort, style & community. Well-maintained & move-in ready, it boasts a kitchen, utility, 2 double beds, ensuite, family bath, private decking, parking, & clubhouse access.

(£472.86/month fees)

Council Tax band: B

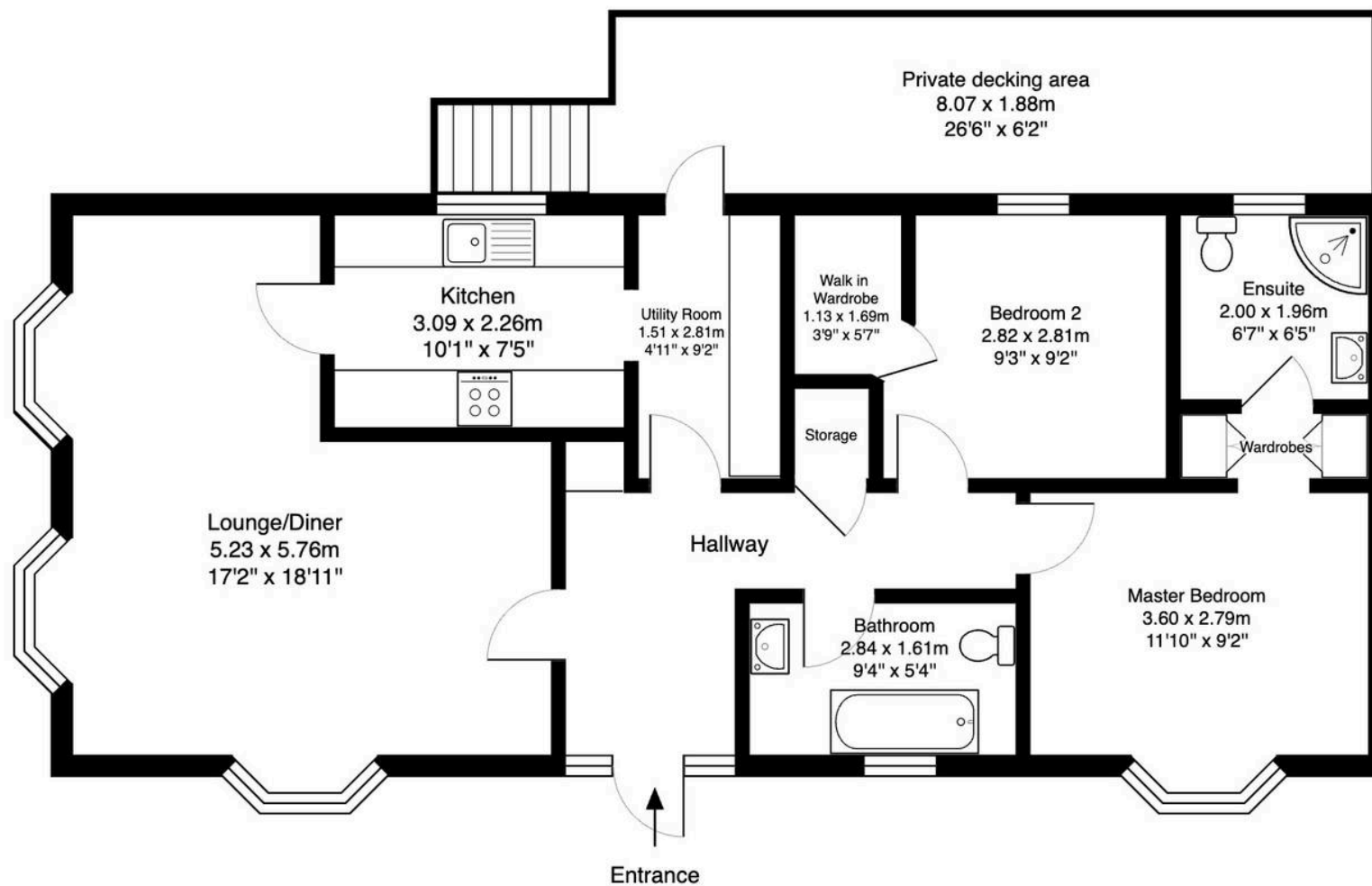
Tenure: Leasehold

- Hayes Country Park for the over 55's
- Large Two Double Bedroom Park Home
- Separate Kitchen and Utility room
- Master Bedroom with Dressing Area & Ensuite
- Kerb appeal property with 2 Driveways
- Large Decking Area with Privacy Guards
- Owned from New By The Current Owners
- High Specification & Maintained to a High Standard
- Members Riverside Clubhouse - Cheerful Atmosphere
- Purchase Price £220,000









Total Area: 82.3 m<sup>2</sup> ... 886 ft<sup>2</sup>

All measurements are approximate and for display purposes only.





You can include any text here. The text can be modified upon generating your brochure.

