



62 Queens Road, Rayleigh
Rayleigh

Guide Price **£465,000**



62 Queens Road

Rayleigh, Rayleigh

Charming 3 bed semi-detached in Rayleigh, blending history with modern comfort. £465,000-£485,000. An 18ft kitchen/diner perfect for gatherings. Convenient location near schools, train station, and airport. Welcoming driveway, 60ft garden. Make it your home sweet home! Council Tax band: C

Tenure: Freehold

EPC Energy Efficiency Rating: D

EPC Environmental Impact Rating: E

62 Queens Road

Rayleigh, Rayleigh

Charming 3 bed semi-detached in Rayleigh, blending history with modern comfort. £465,000-£485,000. An 18ft kitchen/diner perfect for gatherings. Convenient location near schools, train station, and airport. Welcoming driveway, 60ft garden. Make it your home sweet home! Council Tax band: C

Tenure: Freehold

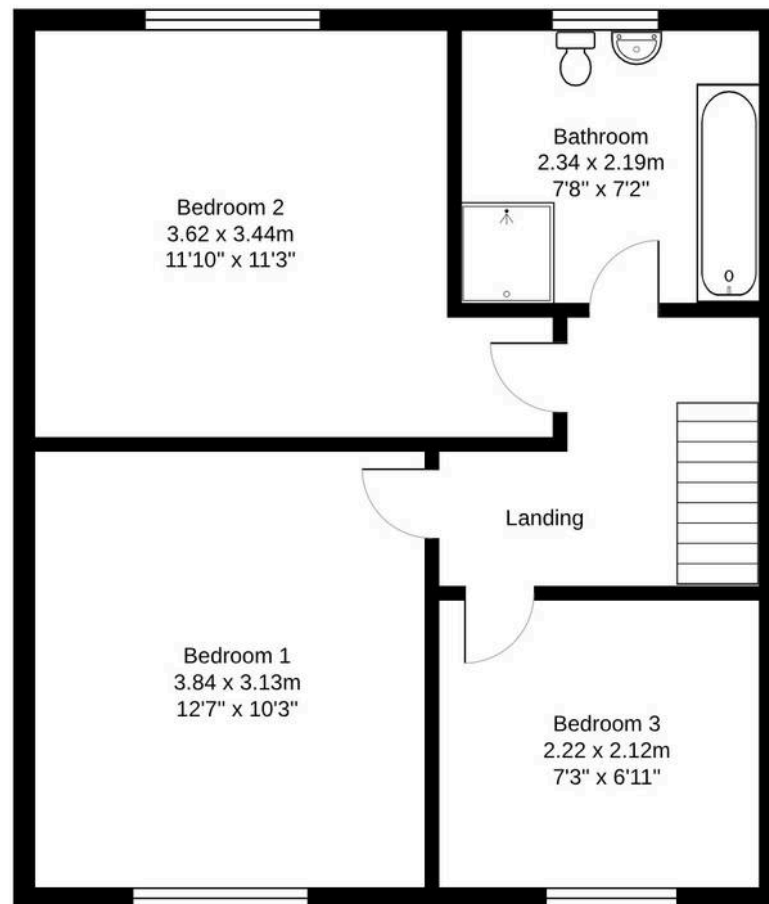
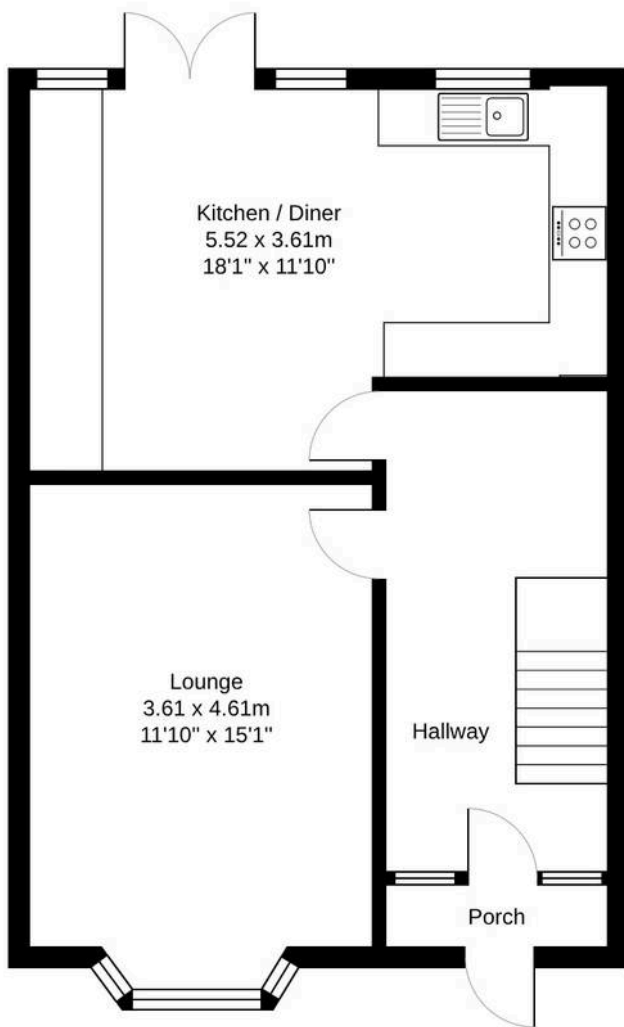
EPC Energy Efficiency Rating: D

EPC Environmental Impact Rating: E

- Guide price £465,000 - £485,000
- 3 bedroom semi-detached family home
- 18ft kitchen/diner ideal for entertaining
- Recently modernised and decorated
- Driveway and a 60ft rear garden
- Within walking distance of primary and secondary schools
- 5-10 min walk to Rayleigh High Street.
- Approx 15 mins to Rayleigh train station.
- This property falls within the catchment area of Rayleigh Primary School and Fitzwimarc Secondary School, both highly regarded institutions known for their excellent educational standards







Total Area: 86.8 m² ... 934 ft²

All measurements are approximate and for display purposes only.



You can include any text here. The text can be modified upon generating your brochure.

