



19 Woodstock Crescent, Hockley
Hockley

Guide Price **£325,000**



19 Woodstock Crescent

Hockley, Hockley

Immaculate 2-bed house with inviting lounge/diner, modern kitchen, luxury shower room, tranquil bedrooms. Two allocated parking spaces, near Hockley Primary School. Walking distance to Hockley Woods, easy commute to London. Private garden ready for your touch. Ideal for families or investors. Book viewing now to make this your home sweet home!

Council Tax band: C

Tenure: Freehold

EPC Energy Efficiency Rating: C

EPC Environmental Impact Rating: C

19 Woodstock Crescent

Hockley, Hockley

Immaculate 2-bed house with inviting lounge/diner, modern kitchen, luxury shower room, tranquil bedrooms. Two allocated parking spaces, near Hockley Primary School. Walking distance to Hockley Woods, easy commute to London. Private garden ready for your touch. Ideal for families or investors. Book viewing now to make this your home sweet home!

Council Tax band: C

Tenure: Freehold

EPC Energy Efficiency Rating: C

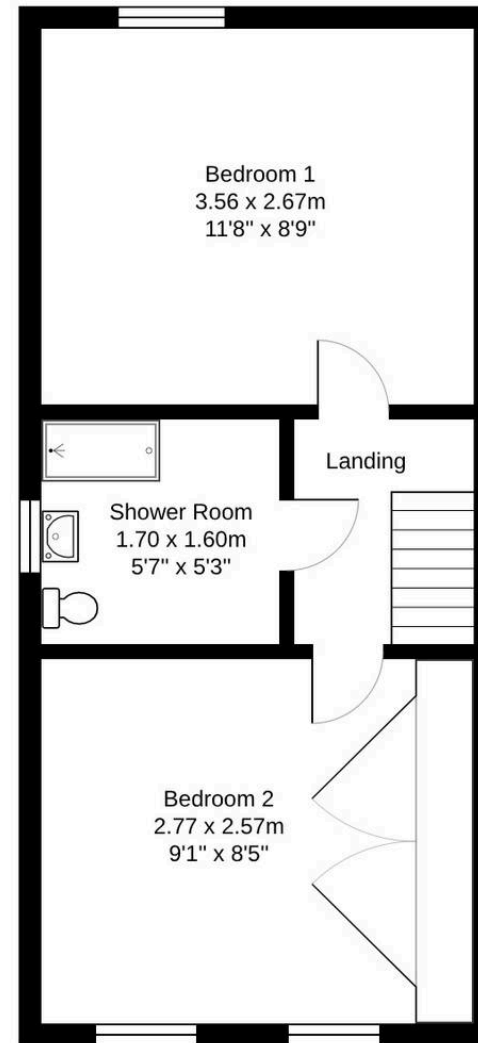
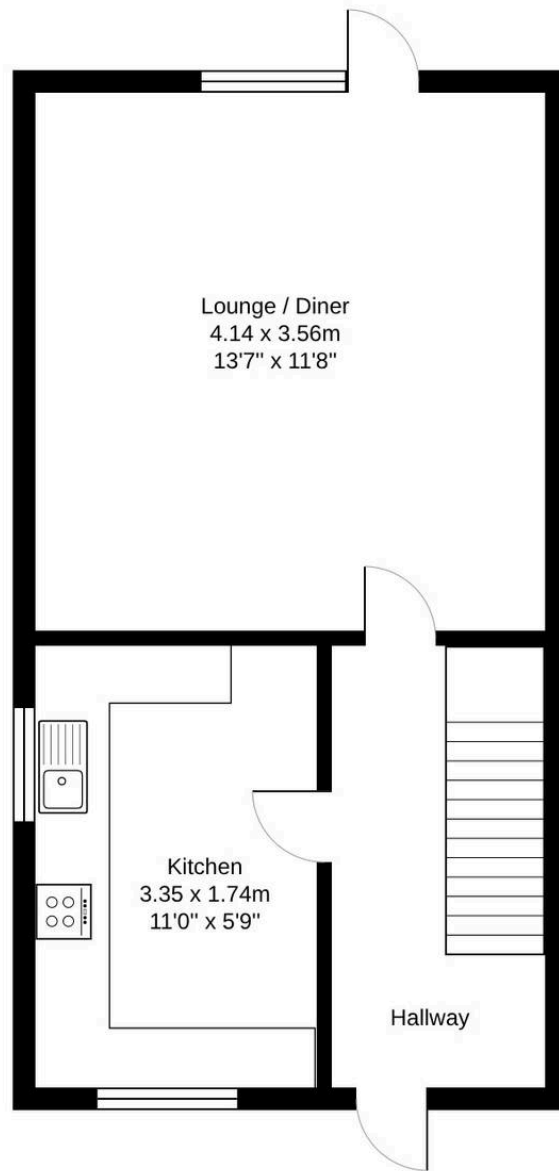
EPC Environmental Impact Rating: C

- Guide Price £325,000 – £350,000
- Immaculate two bedroom semi detached house
- Large Lounge/Diner
- Modern Kitchen
- Impressive first floor shower room
- 2 Allocated Parking Spaces
- 50ft Rear Garden
- Proximity To Hockley Primary School, Ideal For Families
- Situated on the popular Betts Farm development
- Walking distance to Hockley Woods
- Less than a 10 minute walk to Train Station with direct links to London Liverpool St
- Ideal first time purchase or investment property





Woodstock Crescent, Hockley, SS5 4XG





You can include any text here. The text can be modified upon generating your brochure.

